



Travel in Everyday Life

Geumjeong Tourist Guidebook *Travel in Everyday Life*



Geumjeong-gu Office Home Page
geumjeong.go.kr



Geumjeong-gu Office Blog
blog.naver.com/geumjeonggu



Geumjeong-gu Office Instagram
[@smile_geumjeong](https://www.instagram.com/smile_geumjeong)



Geumjeong-gu Office Facebook
[facebook.com/geumjeonggu](https://www.facebook.com/geumjeonggu)



Geumjeong-gu Office Youtube
[youtube.com/c/geumjeonggu](https://www.youtube.com/c/geumjeonggu)



GEUMJEONG-GU
BUSAN METROPOLITAN CITY

1777, Jungang-daero, Geumjeong-gu, Busan, 46274
Tel: 051)519-4081~4 Fax: 051)519-4069

GEUMJEONG-GU



GEUMJEONG-GU
BUSAN METROPOLITAN CITY

Contents

Travel in Everyday Life



Various Geumjeong Travel

- 04 Map
- 06 Guide
- 08 Transportation, Special Product/Food
- 10 Seasonal Trip
- 12 Alley Trip
- 14 Tour



Looking Back on Travels

- 18 Ten Attractions
- 20 Geumjeongsan Mountain
- 22 Geumjeongsanseong Fortress Village
- 24 Beomeosa Temple
- 26 Hoedong Reservoir
- 28 Pusan National University Youth Street
- 30 Seo-dong Maze Market
- 32 Yosan Literary Museum
- 34 Oryundae Korean Martyrs Museum
- 36 Spo1 Park
- 37 Busan Al-Fatih Masjid



Healing through Travel

- 38 Nature/Scenery
- 40 Geumjeongsanseong Fortress
- 42 Hoedong Reservoir Walking Trail
- 43 Busan Galmaet-gil
- 44 Yunsan Mountain
- 46 Oncheoncheon Stream
- 47 Upper Suyeong Riverside Trail,
Dugu-dong Lotus Colony



Making Memories through Travel

- 48 Culture/History
- 50 Beomeosa Seongbo Museum,
Pusan National University Museum
- 51 Gukcheongs Temple, Mireuksa Temple,
Jeongsuam Hermitage
- 52 Hongbeopsa Temple, Anguk Zen Center
- 53 Hwangsando-gil and Sosan Station
- 54 Culture and Art Space
- 55 Everyday Culture Space
- 56 Local Bookstore
- 57 Small Library
- 58 Cultural Asset



Travel Is Always a Good Idea

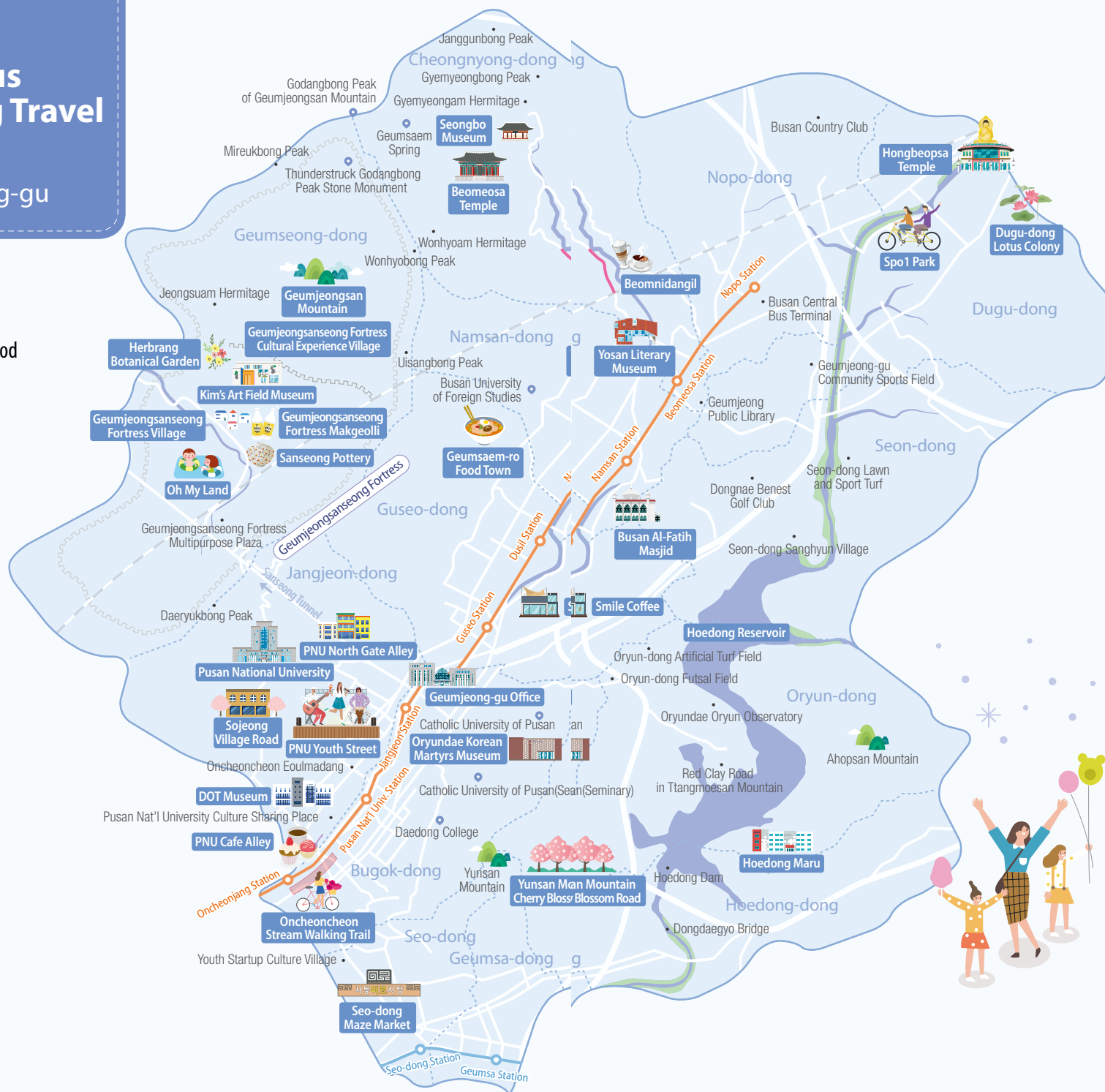
- 60 Festival/Experience
- 62 The First Full Moon of The Year Festival,
Geumjeong Representative Festival
- 63 Festivals for Children, Summer Water Festival
- 64 Busan Geumjeong International Street Art
Festival, La La Geumjeong
- 65 Accommodations, Sports
- 66 Famous Restaurant of Geumjeong



Various Geumjeong Travel

Geumjeong-gu

- 06 Guide
- 08 Transportation,
Special Product/Food
- 10 Seasonal Trip
- 12 Alley Trip
- 14 Tour





Guide

Geumjeong is one of the unique destinations in Busan, thanks to its history, culture, and fun with nature and landscape. Here are some travel tips to Geumjeong.

Via Social Media

You can find the latest news in Geumjeong. Check out Geumjeong-gu's official channels in social media, where you can learn the most popular destinations and top photography spots of Geumjeong.



► Blog
blog.naver.com/
geumjeonggu



► Facebook
facebook.com/
geumjeonggu



► Twitter
twitter.com/
geumjeonggu



► Instagram
@smile_geumjeong

Via Cultural Tourist Guide Service

Apply Cultural Tourist Service for old stories and Geumjeong Tourist Guide Service for natural exploration. You can call for inquiries and reservations.

Division	Tourist Attractions	Manage	Phone Call
Cultural Tourist Service	Beomeosa Temple	Monday–Sunday, 10:00–17:00 (1 hour)	051-508-3724
	Oryundae Korean Martyrs Museum	Wednesday–Sunday, 10:00–17:00 (1 hour)	051-583-2923
	Geumjeongsanseong Fortress (East Gate, North Gate)	Saturday–Sunday, 10:00–17:00 (1–2 hours)	051-888-6875
Geumjeong Tourist Guide Service	Heodong Reservoir (Entrance to Sanghyun Village, Waterside Deck of Nature Experience Center in Oryun Bon-dong)	Weekends, 10:00–12:00	051-519-4084

Via Tourist Information Center

It's the easiest way to get travel and tourist information; you can just call them. The service is available in many languages, including English, Japanese, and Chinese.

1330	Tourist Guide (Providing foreign language translation services)
051-253-8253	Busan Tourist Information Center (Nampo-dong)
051-502-7399	Busan Tourist Information Center (Nopo-dong)
051-441-6565	Busan Station Tourist Information Center
051-861-1101	Tourist Complaint Center



Transportation



Express/Intercity Bus

Division	Main Route	Location	Phone Call
Busan Central Bus Terminal	Seoul, Dongseoul, Uijeongbu (Guri), Incheon, Dongdaegu, Gyeongju and so on	2238, Jungang-daero	1577-9956
Busan Central Bus Terminal	Incheon Airport, Jinju, Masan, Changwon, Jinhae, Ulsan and so on	2238, Jungang-daero	1688-9969



Town Bus

Bus	Main Route
Geumjeong-gu 1	Sanseong Gonghae Village ↔ Geumseong-dong Community Service Center
Geumjeong-gu 2-1	Beomeosa Station ↔ Geumjeong-gu Library
Geumjeong-gu 2-2	Beomeosa Station ↔ Busan Central Bus Terminal (Nopo Station) ↔ Geumjeong Sports Park
Geumjeong-gu 3	Guseo Station ↔ Busan University of Foreign Studies ↔ Namsan-Station
Geumjeong-gu 3-1	Seon-dong Sanghyun Village ↔ Entrance to Hoedong Reservoir ↔ Beomeosa Station
Geumjeong-gu 5	Jangjeon Station, Exit 4 ↔ Catholic University of Pusan ↔ Oryundae Martyrs Shrine / Oryundae Korean Martyrs Museum ↔ Hoedong Walking Trail / Clay Forest Trail
Geumjeong-gu 5-1	Pusan Nat'l Univ. Station ↔ Jangjeon Station, Exit 4 ↔ Catholic University of Pusan ↔ Geumjeong-gu Office
Geumjeong-gu 6	Shindonga Apt. ↔ Geumsa Station ↔ Geumsa Industrial Complex-Geumsa-dong Top Mart ↔ Hoedong-dong ↔ Seo-dong Market ↔ Oncheonjang Station
Geumjeong-gu 7	Pusan Nat'l Univ. Station ↔ The main gate of the Pusan National University

Special Product/Food

Taste the must-eat foods in Geumjeong and make fond travel memories.



Special Product



Geumjeongsanseong Fortress Makgeolli

The 500-year-old Geumjeongsanseong Fortress Makgeolli (Rice Wine) is one of the famous local delicacies. You can experience the rich taste of traditional liquor.

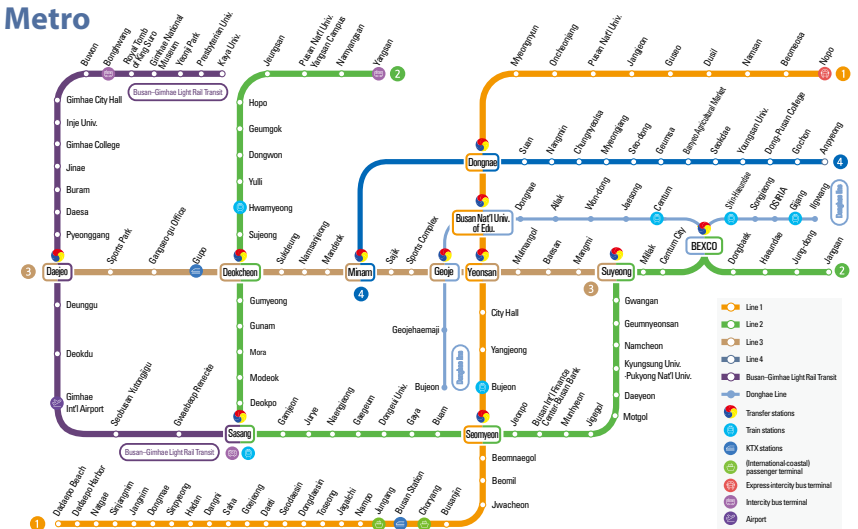
Place of Purchase Geumjeongsanseong Fortress Makgeolli (453, Sanseong-ro)
Inquiries 051-517-0202 **Prices** 6% KRW 1,500, 8% KRW 2,000



Special Product/Food



Metro



Subway Line	Direction	First Trip	Last Trip	Direction	First Trip	Last Trip
Line 1	Nopo → Dadaepo Beach	05:08	23:16	Dadaepo Beach → Nopo	05:04	23:11
Line 2	Yangsan → Jangsan	05:11	23:07	Jangsan → Yangsan	05:18	23:11
Line 3	Suyeong → Daejeo	05:20	23:59	Daejeo → Suyeong	05:16	23:40
Line 4	Anpyeong → Minam	05:05	23:44	Minam → Anpyeong	05:40	00:20
Donghae Line	Ilgwang → Bujeon	05:30	23:34	Bujeon → Ilgwang	05:30	23:35
Busan-Gimhae Light Rail Transit	Kaya Univ. → Sasang	05:00	23:36	Sasang → Kaya Univ.	05:00	23:41

※ First/Last train for weekdays



Local Food



Geumjeong Taste Brand

Assorted local flavors, including Madeleine from Lee Heung Yong Bakery, Drip Bag from the Waining Coffee, and cookies from Idae Myeonggwa Bakery.

Place of Purchase Smile Coffee (1810, Jungang-daero)
Inquiries 051-582-2770 **Prices** KRW 15,000



Geumjeongsanseong Fortress Honey Bread Bowl

Made with ingredients from Geumjeongsanseong Fortress, it's the combination of honey and sesame that captures the tastes of all ages.

Place of Purchase Yoon Haseop Bakery (32-1, Guseo-ro), Smile Coffee (1810, Jungang-daero)
Inquiries 051-581-0022, 051-582-2770
Prices 200 g, KRW 4,000, 400 g, KRW 8,000

Seasonal Trip

Spring in Geumjeong with pink petals



Sojeong Village Cherry Blossom Road

Sojeong Village, where cherry blossom blooms, is the best place for enjoying the spring landscape and the beautiful night view.

📍 (Jangjeon-dong) 35, Geumsaem-ro



Yunsan Mountain Cherry Blossom Road

Yunsan Mountain Cherry Blossom Road along with Seogok Elementary School and Seo-dong Library is one of the most famous spring views in Geumjeong where you can watch cultural and art performances.

📍 279, Yunsan-ro ~ 5, Seobu-ro 76beon-gil
(Seogok Elementary School ~ Seo-dong Library)

Summer in Geumjeong with green vitality



Hoedong Reservoir

Summer in Hoedong Reservoir is special. You can walk along Cypress Forest with fresh air and Red Clay Road in Ttangmoesan Mountain.

📍 Oryun-dong, Hoedong-dong



Dugu-dong Lotus Colony

You can see the true worth of Lotus Pond in Dugu-dong when the lotus-flowering summer comes. Enjoy the rare scenic view of the lotus garden.

📍 1117, Dugu-dong

Fall in Geumjeong with romantic vibes



Silver grass of Geumjeongsan Mountain

In fall, Geumjeongsan Mountain is covered with golden silver grass, which will leave you unforgettable memories.

📍 Geumjeongsan Mountain



Autumn Leaves of Spo1 Park

If you want to enjoy fall, check out the Spo 1 Park street covered in fall foliage. Here, fall has already approached while walking along the street with the cool breeze.

📍 (Dugu-dong) 324, Cheyukgongwon-ro 399beon-gil

Winter in Geumjeong with the coziness of snow



Hongbeopsa Temple

You feel warm in winter with the gold Buddhist statue. When you feel like walking quietly, make your way to Heungbeopsa Temple.

📍 (Dugu-dong) 202, Dugu-ro 33beon-gil



Beomeosa Temple

Cultural assets, such as Daeungjeon Hall, stay still in the cold winter. Green pine trees fancy up Beomeosa Temple gorgeously and beautifully.

📍 (Cheongnyong-dong) 250, Beomeosa-ro

Alley Trip



Hidden charms in every alley

Pusan National University Cafe Alley

This is the cafe alley from Pusan National University Station, a metro line 1 and Jangjeon Station. You can see coffee shops, gourmet restaurants, and beer bars in every alley, making it hard to pick one.

Location Pusan Nat'l Univ. Station, Metro Line 1 (In front of Pusan National University)



The best flavor alley in Busan

Pusan National University North Gate Alley

Located in the north of Pusan National University, the gourmet alley is also called Bukmatgol. You can pick one for your meal among 20 restaurants. The cafe alley is located nearby, making your travel even more good.

Location (Jangjeon-dong) 61, Geumgang-ro 321beon-gil



A cup of coffee looking out the stream

Oncheoncheon Stream Walking Trail

The street connects Jangjeon Station and Pusan National University Station. Moreover, the Oncheoncheon Stream runs on one side while cafes gather on the other side. Indulge yourself in a cup of coffee after taking a walk.

Location Jangjeon Station~Pusan Nat'l Univ. Station, Metro Line 1



The village road toward Geumjeongsanseong Fortress

Sojeong Village Road

It's the village in Jangjeon 2-dong. The village is as beautiful as its name, which means a mythical Taoist hermit lives there. It is the corner connected to Geumjeongsanseong Fortress, where you can start your travel.

Location (Jangjeon-dong) 23, Geumsaem-ro *On the basis of Jangjeon Church

DOT Museum, Connect life and art



It's the private art museum on the Sojeong Village road that exhibits the works of different genres and topics.

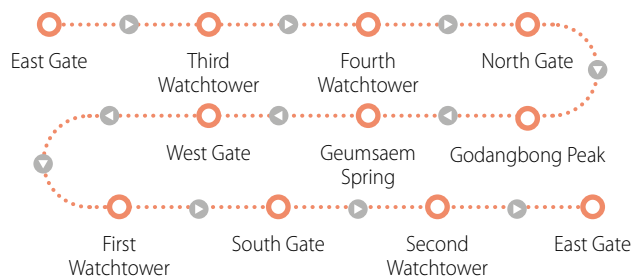
Location (Jangjeon-dong) 35, Geumsaem-ro

Tour

Geumjeongsan Mountain Tour Course 1 "Geumjeongsanseong Fortress Trail" 18,845 m, 7.5 hours



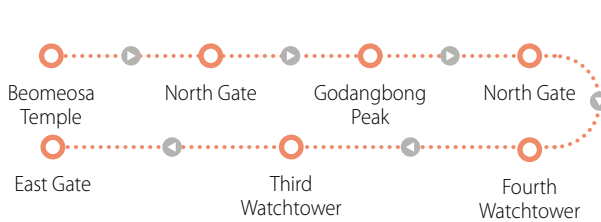
You can go everywhere in Geumjeongsan Mountain from here. Moreover, you can learn about the four great gates and see Geumsaem Spring, where the name Geumjeong originated.



Geumjeongsan Mountain Tour Course 2 "Beomeosa Temple Trail" 7.4 km, 3.5 hours



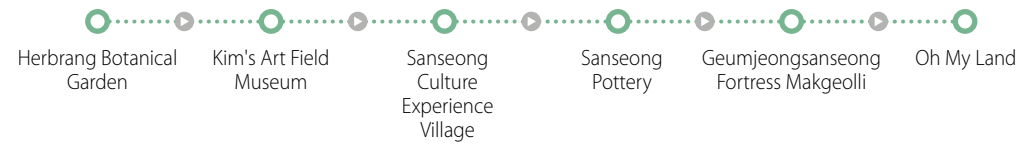
It's an essential Geumjeongsan Mountain tour recommended for those not interested in long-distance hiking. There, you can admire the stunning views of nature and learn the history and culture of the mountain.



Geumjeongsanseong Fortress Village Experience Tour 1 hour



Experience different activities in Geumjeongsan Mountain while enjoying the forest with food and drinks, such as Korean traditional rice wine (makgeolli).



Hoedong Reservoir Tour 8.7 km, 2.5 hours



Watch the breathtaking panoramic views of the lake along with the village. You can also witness spectacular views at the observatory and walk along the Red Clay Road in Ttangmoesan Mountain.





Healing and Religion Tour 3.5 hours

Check out this special culture tour to experience different religious cultures. Here, you can also learn the meaning and history of religions from Catholicism, Islam, and Buddhism.



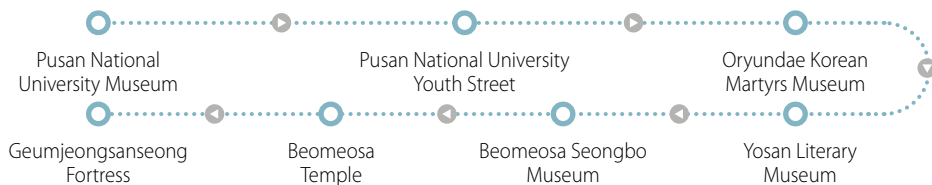
Geumjeong Food Tour 1 hour and 40 min

If you want to try the must-eat foods in Geumjeong, pick the food tour and stuff yourself with street foods at traditional markets and coffee with dessert.



History and Culture Tour 5 hours

Go on a historic and cultural tour in Geumjeong. Enjoy learning about the old days or a scene from the literature during the tour.



BTS Jimin Road Tour 2 hours

Follow the traces of Jimin, a member of the South Korean boy band BTS, by drinking a cup of coffee and imagining his childhood memories at Hoedong Maru (formerly Hoedong Elementary School).



Vibe Street Exploration Tour 2 hours

A street tour is one of the ways to enjoy the city. Various vibe streets are in Geumjeong. You can witness the uniqueness of Village Street, College Street, and Cafe Alley.

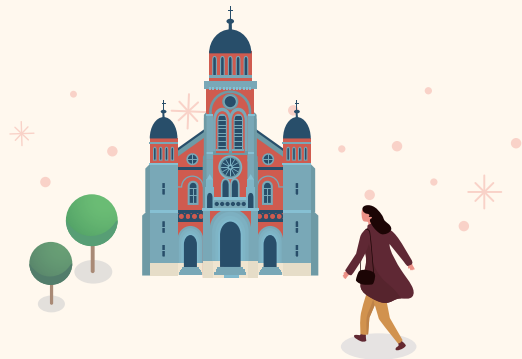
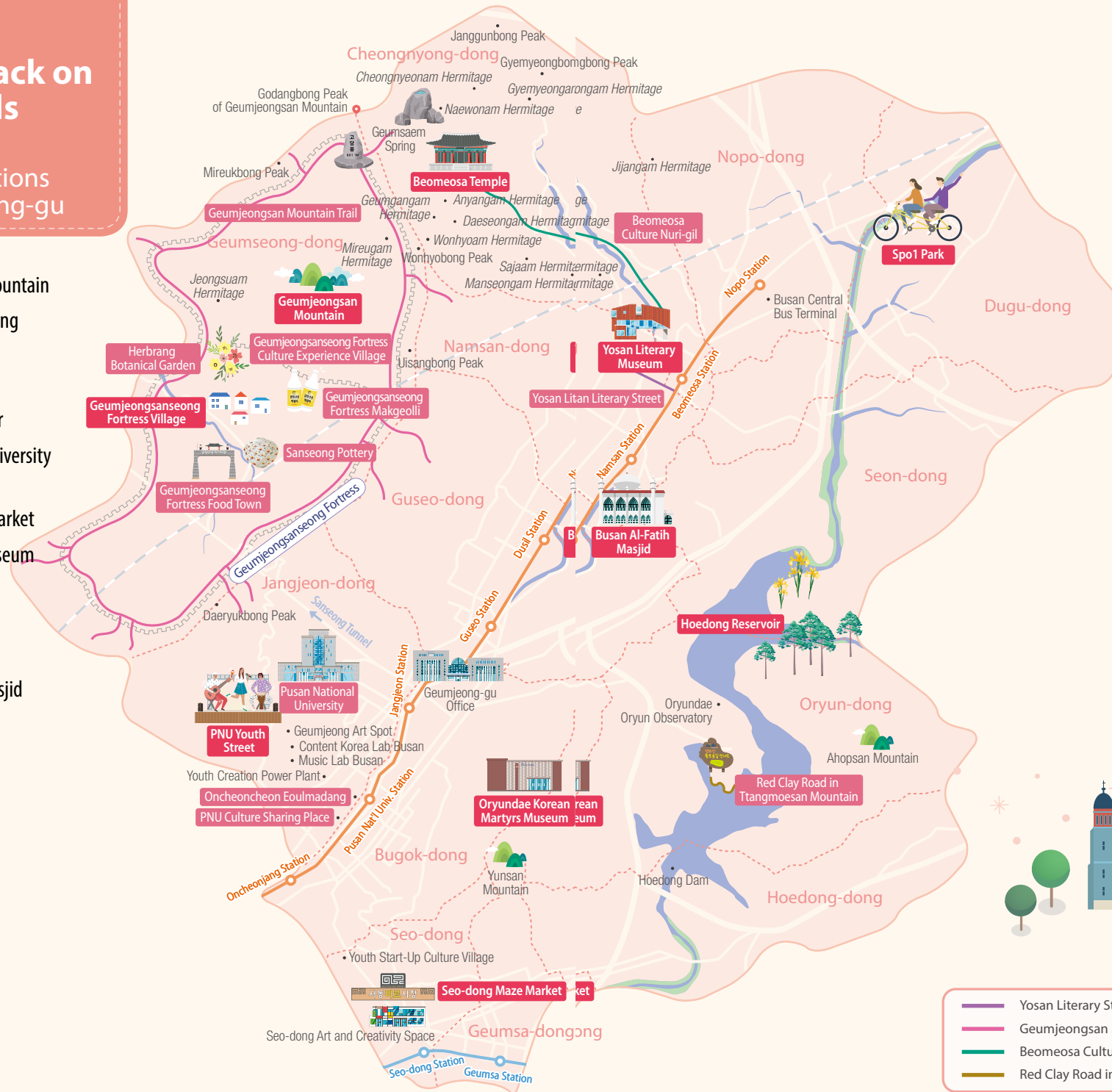




Looking Back on Travels

Ten Attractions in Geumjeong-gu

- 20 Geumjeongsan Mountain
- 22 Geumjeongsanseong Fortress Village
- 24 Beomeosa Temple
- 26 Hoedong Reservoir
- 28 Pusan National University Youth Street
- 30 Seo-dong Maze Market
- 32 Yosan Literary Museum
- 34 Oryundae Korean Martyrs Museum
- 36 Spo1 Park
- 37 Busan Al-Fatih Masjid





All-year-round sunshine Geumjeongsan Mountain

The highest mountain in Busan

It's the guardian mountain of Busan and the iconic mountain of Geumjeong where the sun shines the earliest on the Korean Peninsula. This mountain is famous for different trail courses from gentle slope to rock climbing.

- Directions**
- 1 Beomeosa Station, Metro Line 1 ➤ Transfer to Bus 90 ➤ Get off at Beomeosa Temple ➤ Geumjeongsanseong Fortress (North Gate Bound)
 - 2 Oncheonjang Station, Metro Line 1 ➤ Transfer to Bus 203 ➤ Get off at Geumseong-dong Community Service Center
 - 3 Deokcheon Station, Metro Line 3 ➤ Transfer to Town Bus Geumjeong-gu 1 ➤ Get off at Sanseong Gonghae Village ➤ Geumjeongsanseong Fortress (West Gate Bound)
 - 4 Car ➤ Busan Expressway No. 1 Guseo IC ➤ Beomeosa Temple
 - 5 Car ➤ Sanseong Tunnel ➤ Geumjeongsanseong Fortress (West Gate Bound)

Geumjeongsan Mountain Trail

Geumjeongsan Mountain has different trails. We've selected the ones that start from Geumjeong-gu District. There, you can heal your body and become healthy while walking in nature.

- **No. 1 Hiking Trail** (5.07 km, 100 min): Gyeongdong Apt. ➤ Gyemyeongbong Peak ➤ Godangbong Peak
- **No. 2 Hiking Trail** (1.45 km, 40 min): Behind the Entrance to Beomeosa Temple ➤ North Gate
- **No. 3 Hiking Trail** (1.88 km, 60 min): Sangma Village ➤ North Gate
- **No. 4 Hiking Trail** (3.09 km, 75 min): Gunam Tower Apt. ➤ Wonhyobong Peak
- **No. 5 Hiking Trail** (2.31 km, 50 min): Behind the playground of Busan University of Foreign Studies ➤ Fourth Watchtower
- **No. 6 Hiking Trail** (2.75 km, 60 min): Full Gospel Geumjeong Church ➤ Fourth Watchtower
- **No. 7 Hiking Trail** (2.56 km, 70 min): Woosung Apt. ➤ Third Watchtower
- **No. 8 Hiking Trail** (2.05 km, 55 min): Geumgang Apt. ➤ Castle wall on the mountaintop
- **No. 9 Hiking Trail** (2.89 km, 65 min): Above the botanical garden ➤ Sanseonggogae
- **No. 10 Hiking Trail** (2.28 km, 70 min): Behind the botanical garden ➤ South Gate



Golden well that never dries up **Geumsaem Spring**

This is the well that is located on top of the rock on the south of Godangbong Peak. It is also known as "Golden Spring" because, as legend says, the golden fish was swimming there.



Looking up landscapes **Godangbong Peak**

It is the highest peak of Geumjeongsan Mountain, located at an elevation of 801.5 m. The Godangbong Peak Stone Monument was struck by lightning and was relocated to the North Gate Hiking Information Center. Thus, the new stone landmark was erected at the current location.



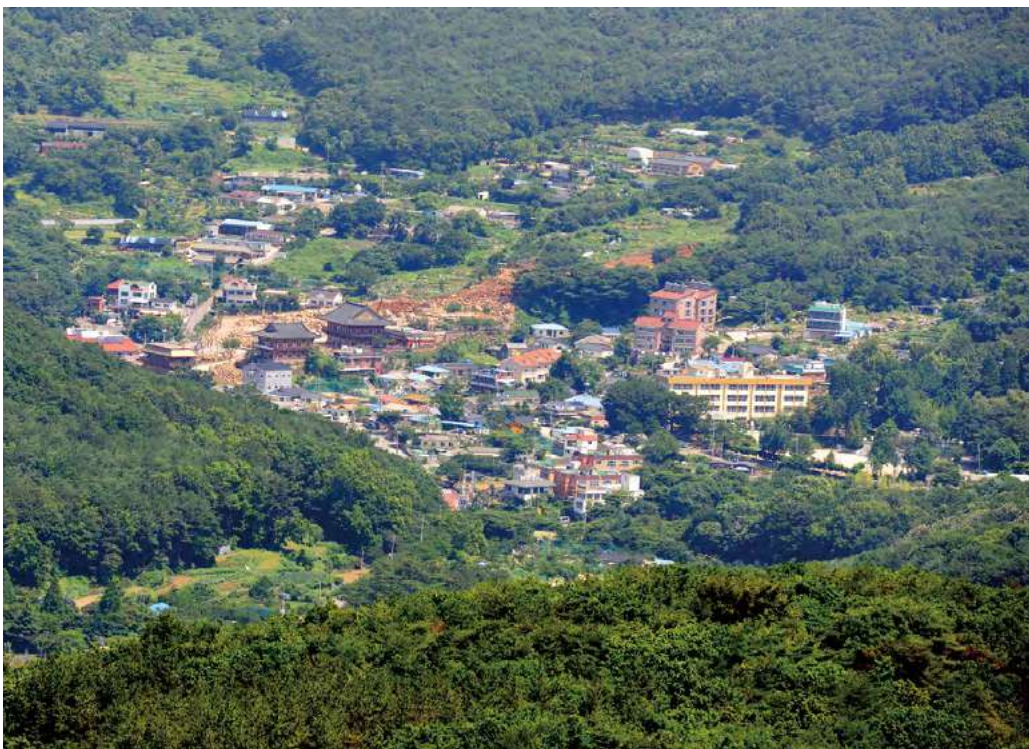
Full of delicious fun

Geumjeongsanseong Fortress Village

Three villages in Geumjeongsan Mountain

The villages refer to Jukjeon, Jungri, and Gonghae, located 400 m above the sea level. They are surrounded by the greenery and ridges of the Geunjeongsan Mountain.

Directions ① Oncheonjang Station, Metro Line 1 ▶ Transfer to Sanseong Bus 203 ▶ Get off at Sanseong Village
② Deokcheon Station, Metro Line 2 ▶ Transfer to Town Bus Geumjeong-gu 1 ▶ Get off at Sanseong Village



The savor of nature Geumjeongsanseong Fortress Food Town

We have selected about 150 restaurants where you can enjoy foods from Geumjeongsan Mountain. You can try Black Goat Bulgogi at a restaurant over 30 years of tradition and the famous Geumjeongsanseong Fortress Makgeolli.

Meet the traditional culture in nature

Geumjeongsanseong Fortress Village Experience



Refresh your body and spirit with the traditional culture in nature. You can enjoy a wide range of activities, such as porcelain making and natural dyeing.

Location (Geumseong-dong) 42, Jukjeon 2-gil
Activity Fees Adult KRW 15,000, Child KRW 10,000
Inquiries 051-513-6848
Home Page sanseong.alltheway.kr



Learn from the Buncheon Sagi (grayish-blue-powdered celadon) masters for over 40 years about the charms of pottery and how to use the traditional kiln.

Location (Geumseong-dong) 38, Jungni 1-gil
Activity Fees Individual KRW 20,000, Group KRW 15,000 (10 persons and more)
Inquiries 051-517-8376



Visit the Makgeolli Brewery where you can learn about the history and the process of Geumjeongsanseong Fortress Makgeolli with the 500-year-old tradition.

Location (Geumseong-dong) 453, Sanseong-ro
Activity Fees Make Nuruk KRW 10,000, Make Makgeolli KRW 15,000
※ Reservations for at least 10 people are available
Inquiries 051-517-0202
Home Page <https://www.sanmak.kr>



It's the forest experience with the nature of Geumjeongsan Mountain. Get close with a wide range of plants and enjoy the group experience with experts.

Location (Geumseong-dong) 73, Bungmun-ro
Entrance Fee KRW 5,000 (Pay Activity Fees)
Inquiries 051-515-0130
Home Page <https://www.herbrang.kr>



Marvel at the 1000-year-old temple Beomeosa Temple

One of the three temples in Southern Region

Beomeosa Temple is one of the three Buddhist temples with Hapcheon Haeinsa Temple and Yangsan Tongdosa Temple. This is a sacred site where you can enjoy silent beauty.

Location (Cheongnyong-dong) 250, Beomeosa-ro **Inquiries** 051-508-3122 **Home Page** www.beomeo.kr

Directions ① Beomeosa Station (Exit 5, 7), Metro Line 1 ➡ Transfer to Bus 90 ➡ Get off at Entrance to Beomeosa Temple
② Bus 37, 49, 148 ➡ Get off at Busan Central Bus Terminal (Nopo Station) ➡ Transfer to Bus 90 ➡ Get off at Entrance to Beomeosa Temple



• **Course** (2.26 km, 50 min): Cheongnyong Bridge 2 ➡ 108 Stairs ➡ Hama Village ➡ Beomeosa Temple

Beomeosa Culture Nuri-gil

The walking trail connects from Cheongnyong Bridge 2 to Beomeosa Temple. The trail consists of four courses: Space of Emptiness, Space of Meditation, Oneness with Nature and Spiritual Rest.



Pilgrimage route along a temple Beomeosa Temple 11 Amja-gil

The 11 Hermitage Roads designated as Busan Sullye-gil Road comprise Jijangam Hermitage, Gyemyeongam Hermitage, Naewonam Hermitage, Cheongnyeongam Hermitage, Sajaam Hermitage, Manseongam Hermitage, Wonhyoam Hermitage, Mireukam Hermitage, Daeseongam Hermitage, Anyangam Hermitage, and Geumgangam Hermitage.



The Journey of Self-Discovery Templestay

Templestay is a Buddhist culture program where you can experience asceticism and the daily life of Buddhist monks at the temple.

Inquiries 051-508-5726

Religion and tradition Seon Culture Education Center

Here, you can try the Buddhist meditation and temple foods. It's the best place for people to experience the world of meditation.





Rest area in the city

Hoedong Reservoir

It's the water resource for Busan that boasts stunning views.

Holding 1850t of water with a total width of 2.17 km², it is the No. 1 eco-healing spot with stunning views. From its opening to the public, it has maintained a clean nature up to the present.

- Directions**
- ① Guseo Station (Exit 2), Metro Line 1 ➡ Transfer to Town Bus Geumjeong-gu 3-1 ➡ Get off at Entrance to Sanghyun Village
 - ② Jangjeon Station (Exit 4), Metro Line 1 ➡ Transfer to Town Bus Geumjeong-gu 5 ➡ Get off at Oryun Bon-dong
 - ③ Bus 42, 99, 179 ➡ Get off at Hoedong-dong

How to have more fun at Hoedong Reservoir



Sanghyun Village

If you want to snap away at Hoedong Reservoir, go to Sanghyeon Village where you can get a shot of Hoedong Reservoir as a background.



Red Clay Road in Ttangmoesan Mountain

If your feet hurt from walking around Hoedong Reservoir, walk barefoot along the cool Red Clay Road in Ttangmoesan Mountain.



Nature Experience Center

Otters and Korean dark chub live in Hoedong Reservoir. Spend time with animals and plants at the Nature Experience Center, a biological repository.



Oryundae

Oryundae is the place where old classical scholars, who studied the doctrines of Chu Tzu in the Joseon Dynasty era, stayed in. Set your sights on the gorgeous views.



Hoedong Reservoir Picnic Tour Program

The program includes healing meditation and eco-trekking. You can make a reservation via Geumjeong-gu Culture and Tourism division.

Be infatuated with youth Pusan National University Youth Street

Famous youth street in Busan

This is the street where young people in Busan gather. Explore and feel the dreams, passion, and freedom of the youth by walking along the street from Pusan National University station to Pusan National University.

- Directions**
- ① Pusan Nat'l Univ. Station, Metro Line 1
 - ② Bus 49, 51, 100 ➤ Get off at Main Gate of Pusan National University
 - ③ Bus 77, 100-1 ➤ Get off at Back Gate of Pusan National University



Various fun activities **Unique alley near PNU**



Cafe Street

The alley welcomes you with the smell of freshly brewed coffee. Enjoy its special-themed cafes.



Tarot Street

Having some trouble? Head to the tarot street. Those tarot shops will hit the spot.



Pub Street

Cap off your night with a cup of beer, making you excited about the vibrant atmosphere.



Graffiti along Oncheoncheon Stream

It's the art space transformed by artists from the concrete into artistic works. Enjoy the graffiti on the street.

Youth culture on the street

Pusan Nat'l Univ. Station Culture Sharing Place



This is the famous youth cultural space in Busan. A wide range of youth culture events draws attention, including street performances and flea markets.

- Location** In front of Exit 1 of Pusan National University Station
- Inquiries** 051-518-0053

Oncheoncheon Eoulmadang



This is one of the cultural spaces in Busan. It's the outdoor stage near Pusan National University station, where youth and residents enjoy cultural festivals.

- Location** Short distance from Pusan National University Station Exit 3
- Inquiries** 051-518-0053

Enjoy youth culture at PNU Daehak-ro

You don't want to miss special events held only on Pusan National University Daehak-ro (campus street). Enjoy street performances every day at the Busan International Youth Culture Festival.



Traditions, hearts and arts: all in one place

Seo-dong Maze Market

Joyful market with culture

The cultural tourism market comprises Seo-dong Traditional Market, Seo-dong Rural Market and Seo-dong Alley Market. Seo-dong Art and Creativity Space offers cultural experience programs.

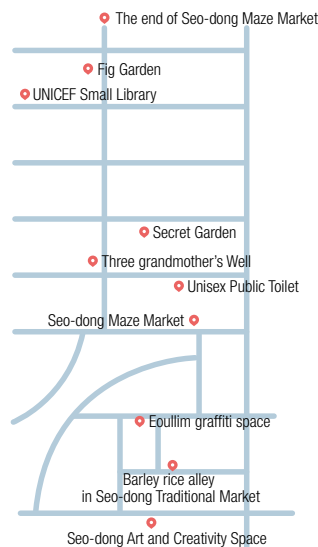
Location (Seo-dong) 16, Seodong-ro 141beon-gil

Inquiries 051-527-8196

Home Page www.sdmiro.net

Directions

- 1 Seo-dong Station (Exit 1), Meteo Line 4 ▶ 10 min walk
- 2 Bus 42, 99, Town Bus Dongnae-gu 1 ▶ Get off at Back gate of Sewoong Hospital
- 3 Bus 148, 155, 179 ▶ Get off at Seo 3 Community Security Center
- 4 Bus 29, 183, 189 ▶ Get off at Seo 1-dong Saemaeul Geumgo
- 5 Town Bus Geumjeong-gu 6, 6-1 ▶ Get off at Seo-dong Market



Must-eat foods at Seo-dong Maze Market



Amazing foods in the traditional market couldn't be better. Check out the famous street foods at Seo-dong Maze Market.



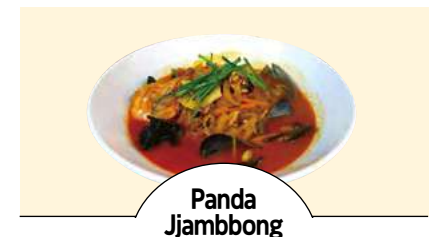
This is the egg dumpling that carries 40 years of tradition in Seo-dong Traditional Market. It comprises fried eggs with glass noodles. Fill yourself up on the savory egg dumpling.



Feel the taste of chewy noodles with clean meat broth. This is perfect if you are looking for a winter warmer soup. Enjoy its traditional Korean flavor.



The egg dumpling place with a long tradition that was broadcasted on a TV show (Master of Living). It looks clumsy outside, but it is made with heart. Dip in soy sauce for better taste.



It boasts rich broth cooked by simmering a variety of ingredients. Its famous menus include Panda Jjambbong and Mussel Jjambbong.





Where traces of watchmen at Nakdonggang River Yosan Literary Museum



Memorial hall with life and literature of Yosan

This is the place where visitors pay their respect to Yosan Kim Jeonghan for life and literary spirit. It keeps the strong will, saying “live life a human being” even during the time of Japanese occupation of Korea and while living in poverty.

Tourist Information

- **Opening Hours** Every Tuesday–Sunday, 10:00–17:00 (Closed on Mondays and National Holidays)
- **Prices** KRW 1,000

Location (Namsan-dong) 60-6, Palsong-ro **Inquiries** 051-515-1655 **Home Page** www.yosan.co.kr

Directions

- 1 Beomeosa Station (Exit 1), Metro Line 1 ➡ 10 min walk
- 2 Jangjeon Station, Metro line 1 ➡ Transfer to Bus 80 ➡ Get off at Namsan-dong ➡ Walk toward the signpost for Yosan Literary Museum
- 3 Bus 49 ➡ Get off at Namsan-dong Nonghyup ➡ Walk for 10 min from the main entrance of Cheongnyong Elementary School

The birthplace of Yosan filled with his life

This is the restored birthplace of Yosan alongside Yosan Literary Museum. The house has a tiled roof that stands gracefully as it shows Yosan's grandfather who was the second richest landowner in the town (myeon).



Yosan Literary Street

The street connects from Yosan Literature Museum to Beomeosa Station. Enjoy Yosan's stories, the excerpts from his writing and graffiti along the wall.



Yosan Literary Museum

Beomeosa Station,
Metro Line 1Cheongnyong
Elementary School

Yosan Literary Street





Where the history of Catholicism remains Oryundae Korean Martyrs Museum

Museum of Catholic church founded in 1982

The Korean Catholic Martyrs Memorial Hall is founded in 1982 by the Sisters of the Blessed Korean Martyrs to remember the belief of Korean Catholic Martyrs. It was promoted to Oryundae Korean Martyrs Museum in March 2009.

Tourist Information

- **Opening Hours** Every Tuesday–Sunday, 10:00–17:00 (Closed on Mondays, New Year's Day, Seollal, Chuseok)
- **Prices** Adult KRW 2,000 / Adolescent (kindergartener, elementary/middle/high school student) KRW 1,000

Location (Bugok-dong) 106-1, Oryundae-ro **Inquiries** 051-583-2923 **Home Page** oryundaemuseum.com

Directions

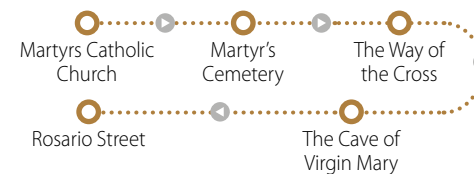
- 1 Jangjeon Station (Exit 4), Metro line 1 ➤ Transfer to Town Bus Geumjeong-gu 5 ➤ Get off at Oryundae Korean Martyrs Museum
- 2 Bus 50, 148, 1002 ➤ Get off at Geumjeong-gu Office ➤ 15 min walk
- 3 Bus 77, 100, 121, 301 ➤ Get off at Jangjeon Station ➤ Transfer to Town Bus Geumjeong-gu 5 ➤ Get off at Oryundae Korean Martyrs Museum
- 4 Car ➤ Busan Guseo IC ➤ Turn left to City Hall ➤ Make a U-turn to Catholic University of Pusan



Martyrs Catholic Church

According to the History of martyrdom in Busan

Visit Oryundae Martyrs Shrine



📍 **Martyrs Catholic Church** This is the Catholic Church built in 1968, the 100th anniversary of the martyred in Suyeong Jangdaegol Village.

📍 **Martyr's Cemetery** This place pays a tribute to the eight people martyred in Suyeong Jangdaegol Village during the Byeongin persecution (1866–1888).

📍 **The Way of the Cross** The way of prayer is by walking along with the sanctified cross with a series of 14 images depicting the path Jesus walked to Mount Calvary.

📍 **The Cave of Virgin Mary** This is the cave made in 1981 modeled after the Catholic church that is founded after a 14-year-old girl saw the Virgin Mary in Massabielle Grotto.

📍 **Rosario Street** Rosario refers to the rosary. You can pray and meditate while walking along the course.



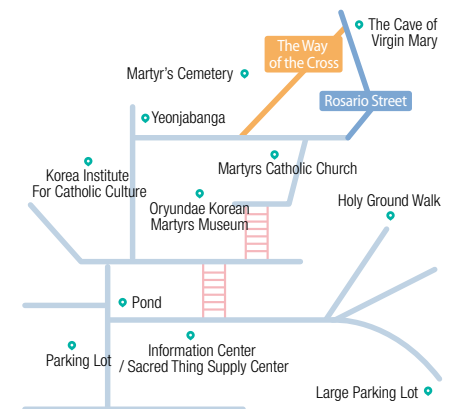
Martyr's Cemetery



The Way of the Cross, Rosario Street



The Cave of Virgin Mary



Location (Bugok-dong) 106-1, Oryundae-ro
Inquiries 051-515-0030~1
Home Page www.oryundae.com

A whole lot of fun Spo1 Park

A park with play and rest

It is an open stadium for bicycle and motorboat racing in addition to the park. Enjoy bicycle racing from Friday to Sunday and motorboat racing from Wednesday to Thursday.

Location (Dugu-dong) 324, Cheyukgongwon-ro 399beon-gil

Inquiries 1577-0880

Home Page www.spo1.or.kr



Directions Nopo Station, Metro Line 1 ▶ Transfer to Town Bus Geumjeong-gu 2-2 ▶ Get off at Spo1 Park

※ Ulsan ↔ Bicycle racing stadium: Runs a shuttle service between Wednesday and Sunday

*Refer to the notice on the website



Park



Sports Center



Motorboat Racing



Bicycle Race



Unusual Religious Trip Busan Al-Fatih Masjid

Busan Mosque spreading Islamic culture

This is the only place where you can experience the Islamic culture in Busan. Entering the mosque requires an appropriate dress code. You can join a guided walking tour.

Location (Namsan-dong) 113-13, Geumdan-ro **Inquiries** 051-518-9991

※ For a group tour, make a reservation in advance

Directions Dusan Station (Exit 8), Metro Line 1 ▶ Walk straight for 300 m ▶ Turn right, from SK Geumgang Gas Station



Cappadocia, official halal-certified restaurants

This is the only official halal-certified restaurant where Turkish chefs cook traditional kebab.

Location (Namsan-dong) 123-9, Geumdan-ro

Inquiries 051-515-5981

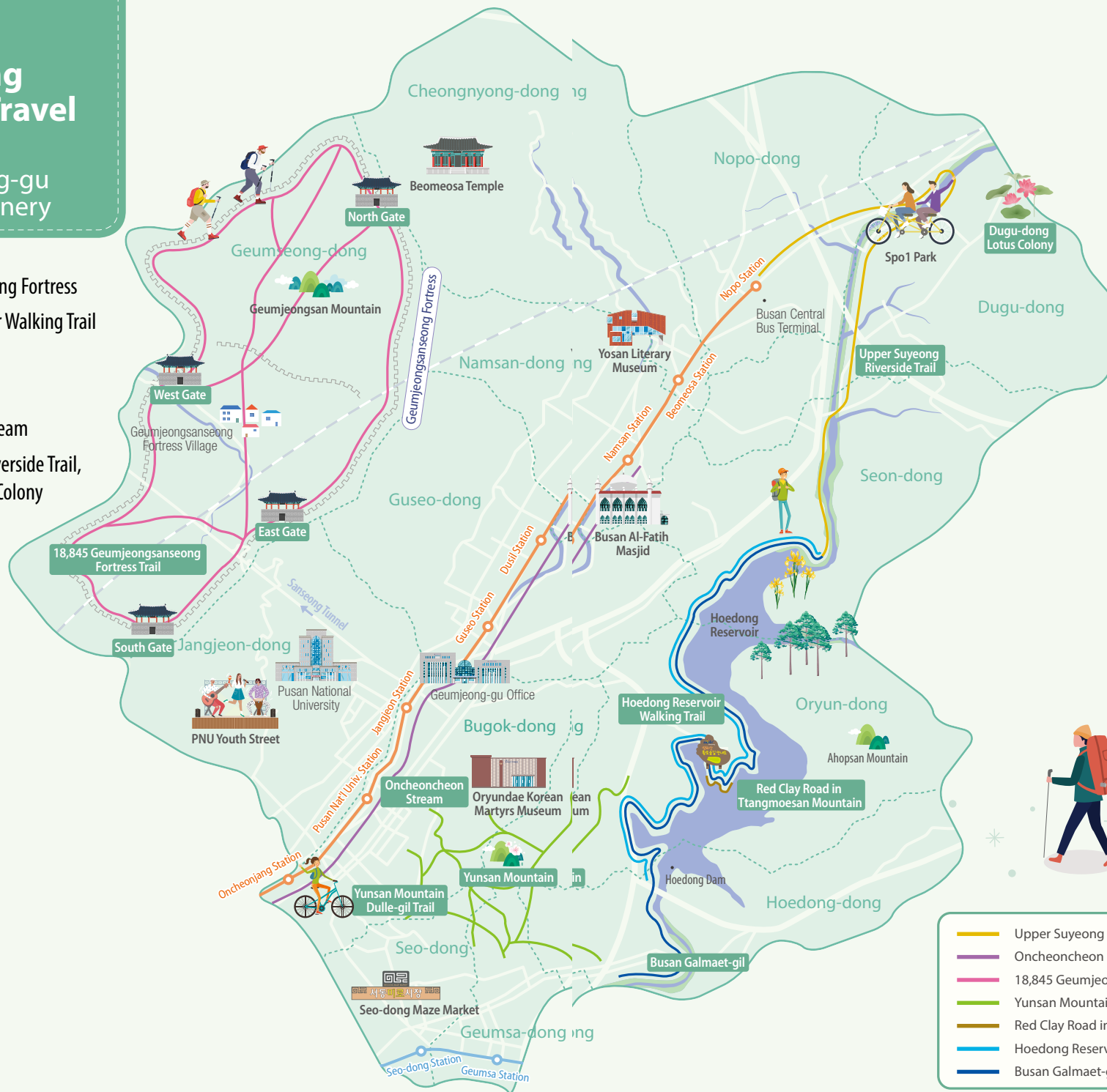




Healing through Travel

Geumjeong-gu Nature/Scenery

- 40 Geumjeongsanseong Fortress
- 42 Hoedong Reservoir Walking Trail
- 43 Busan Galmaet-gil
- 44 Yunsan Mountain
- 46 Oncheoncheon Stream
- 47 Upper Suyeong Riverside Trail,
Dugu-dong Lotus Colony



- Upper Suyeong Riverside Trail
- Oncheoncheon Stream
- 18,845 Geumjeongsanseong Fortress Trail
- Yunsan Mountain Dulle-gil Trail
- Red Clay Road in Ttangmoesan Mountain
- Hoedong Reservoir Walking Trail
- Busan Galmaet-gil





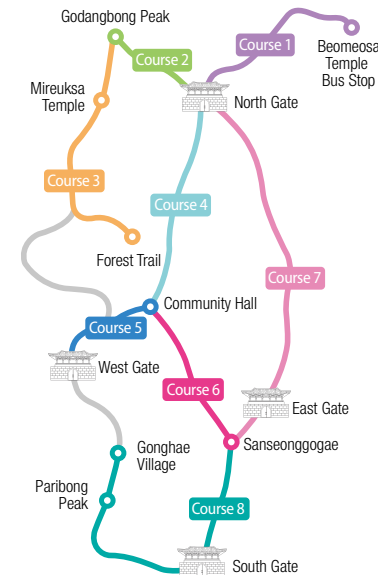
Walking travel along with Sanseong Fortress

Geumjeongsanseong Fortress

The Korea's longest Sanseong Fortress, historical site No. 125.

The longest fortress in Korea, with a total length of 18,845 m, encompasses three gu in Busan, including Geumjung-gu, Buk-gu Dongnae-gu, and Yangsan-si.

- Directions**
- 1 Beomeosa Station, Metro Line 1 ▶ Transfer to Bus 90 ▶ Get off at Beomeosa Temple ▶ Geumjeongsanseong Fortress(North Gate Bound)
 - 2 Oncheonjang Station, Metro Line 1 ▶ Transfer to Bus 203 ▶ Get off at Geumseong-dong Community Service Center
 - 3 Deokcheon Station, Metro Line 3 ▶ Transfer to Town Bus Geumjeong-gu 1 ▶ Get off at Sanseong Gonghae Village ▶ Geumjeongsanseong Fortress (West Gate Bound)
 - 4 Car ▶ Busan Expressway No. 1 Guseo IC ▶ Beomeosa Temple



18,845 Geumjeongsanseong-gil Road with views and history

The name modeled after the width of the fortress is located along Geumjeongsanseong Fortress. As the four main gates are recovered, the road has become one of the walkable roads.

- **Course 1** (2 km, 1 hour): Beomeosa Temple Bus Stop ▶ North Gate
- **Course 2** (1 km, 40 min): North Gate ▶ Godangbong Peak
- **Course 3** (1.5 km, 50 min): Godangbong Peak ▶ Mireuksa Temple ▶ Forest Trail
- **Course 4** (3.5 km, 1 hour): North Gate ▶ Community Hall
- **Course 5** (1.6 km, 30 min): Community Hall ▶ West Gate
- **Course 6** (1.2 km, 30 min): Community Hall ▶ Sanseonggogae
- **Course 7** (4.5 km, 2 hours): Sanseonggogae ▶ North Gate
- **Course 8** (6.3 km, 3 hours): Sanseonggogae ▶ Paribong Peak ▶ Gonghae Village



Three mysterious rocks and eight beautiful views in Geumjeongsanseong Fortress

There are three bizarre rocks and eight beautiful views. You can learn about Geumjeongsan Mountain by checking out these rocks and views.



- **Three Mysterious Rocks at Beomeosa Temple** 1st Rock: Golden well on the rock / 2nd Rock: Wonhyo Stone Embankment / 3rd Rock: Rooster-Hen rock



- **Eight beautiful views in Geumjeong** 1st View: Eosan Old Pine Tree / 2nd View: Daeseong Clear Water / 3rd View: Geumgang Fall Foliage / 4th View: Rainy Night Clean Lotus / 5th View: The Inner Hermitage / 6th View: Moon in Fall from Gyemyeong Hermitage / 7th View: Looking at the Ocean from Uisangdae Pavilion / 8th View: Evening Cloud of Godangbong Peak



Hoedong Reservoir Walking Trail

Healing of nature in the city Hoedong Reservoir Walking Trail



Grand prize-awarded mountain from Galmaet-gil Contest

This is the road where you can feel the stunning views and the fresh nature of Hoedong Reservoir. It received the grand prize from "Galmaet-gil Festival Road Contest." You can sit for a while at the pavilion and take a photo at the photo spot.

- **Course** (8.7 km, 2.5 hours): Sanghyun Village » Oryundae Observatory » Red Clay Road in Ttangmoesan Mountain » Hoedong Dam » Dongdaegyo Bridge

- Directions**
- 1 Guseo Station (Exit 2), Metro Line 1 ➤ Transfer to Town Bus Geumjeong-gu 3-1 ➤ Get off at Entrance to Sanghyun Village
 - 2 Jangjeon Station (Exit 4), Metro line 1 ➤ Transfer to Town Bus Geumjeong-gu 5 ➤ Get off at Oryun Bon-dong
 - 3 Bus 42, 99, 179 ➤ Get off at Hoedong-dong



Red Clay Road in Ttangmoesan Mountain for health walks

This is the most famous section in Hoedong Reservoir Walking Trail. You can walk barefoot in the red clay road and feel its softness.

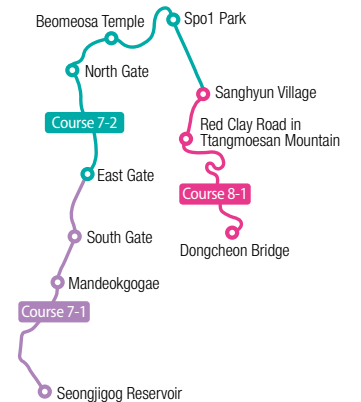
Busan Galmaet-gil

Going around Busan starting from Geumjeong-gu Busan Galmaet-gil

Walking in nature

A compound word from galmaegi (seagull in Korean) and gil (road in Korea), Galmaet-gil means a walkable road in Busan. Among the nine courses, three of them connects with Geumjeong-gu, including courses 7-1, 7-2 and 8-1.

- **Course 7-1** (9.3 km, 4 hours): Seongjigog Reservoir » Mandeokgogae » South Gate » East Gate
- **Course 7-2** (13 km, 5 hours): East Gate » North Gate » Beomeosa Temple » Spo1 Park » Sanghyun Village
- **Course 8-1** (10.2 km, 3 hours): Sanghyun Village » Red Clay Road in Ttangmoesan Mountain » Dongcheon Bridge » Seongjigog Reservoir





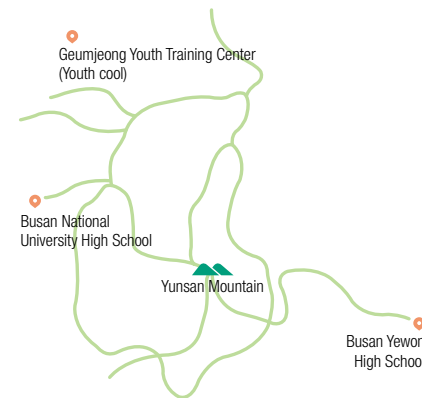
Urban Eco-Learning Center Yunsan Mountain

First eco-forest in Busan

This is a round mountain near eastern Bugok-dong. It boasts beautiful views with well-preserved nature inside the city. It's an eco-friendly cultural space that offers forest and ecological learning to visitors.

Location San 13-7, Bugok-dong

Directions ① Bus 36, 50, 148, 1002 ➤ Get off at Geumjeong-gu Office ➤ 15 min walk toward Bugok Church
② Jangjeon Station (Exit 2, 4), Metro line 1 ➤ Transfer to Town Bus 5 ➤ Get off at Oryun Bon-dong



Mountain and river in one place Yunsan Mountain Dulle-gil Trail

It's the walking trail created along Yunsan Mountain with Oncheoncheon Stream on its west and Suyeong-gang River on its east. You can enjoy the famous mountain, forest and river at once.

Yunsan Mountain Cherry Blossom Festival

This cherry blossom festival is held for a day in April from the entrance of Seogok Elementary School to Seeding Library. Make a sweet memory while at it.



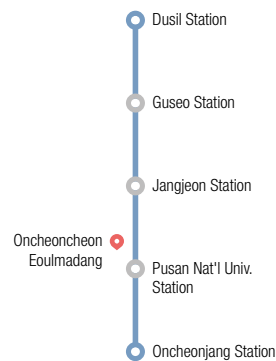


Walk-friendly environment Oncheoncheon Stream

Walking around Oncheoncheon Stream

The road extends to 4.8 km from Oncheonjang Station to Dusil Station. Cultural performances are held at Unconcern Gathering, the urban walking trail where you can enjoy nature and local culture.

- Directions**
- ① Oncheonjang Station, Metro Line 1
 - ② Dusil Station, Metro Line 1



Urban walking along the river Upper Suyeong Riverside Trail

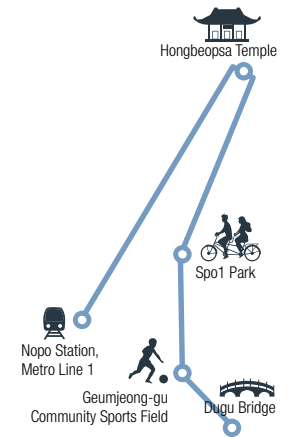
Classy road walking along Suyeong-gang River



It is the nuri-gil extending to 6.1 km along with the upper stream of Suyeong-gang River. The upper stream of the river used to be a conservation area for over 50 years, where you can take wonderful sights and views of the preserved nature.

- Course (6.1 km): Nopo Station, Metro Line 1 » Dugu Bridge

- Directions**
- ① Nopo Station, Metro Line 1



Pink flower filed Dugu-dong Lotus Colony

Reservoir shining with lotus and white lotus

This reservoir was created in 1827 to solve drought in Dugu-dong area. Since a resident sowed a seed of lotus in 1995, lotus comes into full bloom every summer.

Location 1117, Dugu-dong

- Directions**
- ① Town Bus Geumjeong-gu 2-1 » Get off at Jungri
 - ② Town Bus Geumjeong-gu 2-2 » Get off at Seondugu-dong Community Service Center

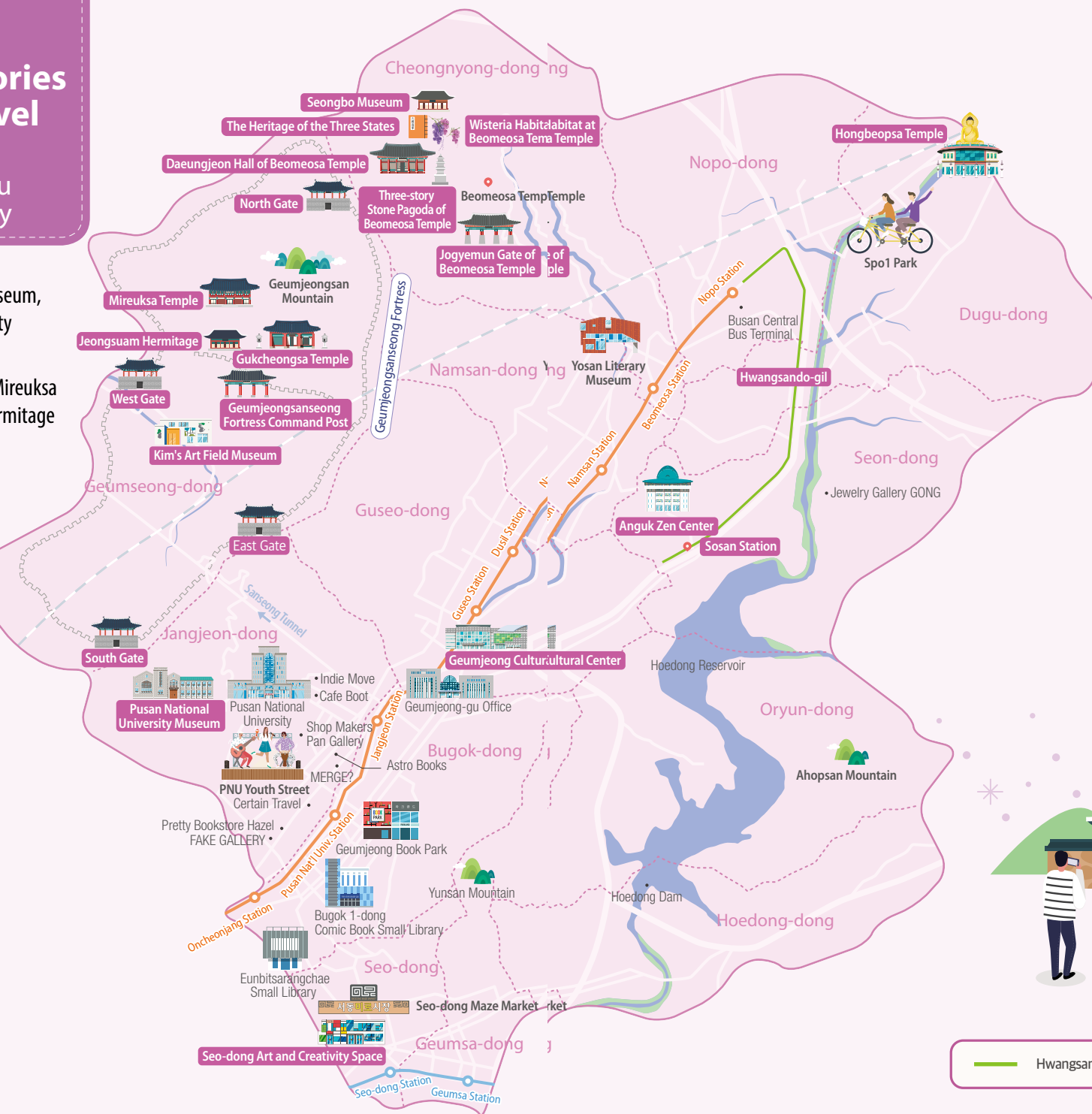




Making Memories through Travel

Geumjeong-gu Culture/History

- 50 Beomeosa Seongbo Museum, Pusan National University Museum
- 51 Gukcheongs Temple, Mireuksa Temple, Jeongsuam Hermitage
- 52 Hongbeopsa Temple, Anguk Zen Center
- 53 Hwangsando-gil and Sosan Station
- 54 Culture and Art Space
- 55 Everyday Culture Space
- 56 Local Bookstore
- 57 Small Library
- 58 Cultural Asset



Hwangsando-gil and Sosan Station





A taste of Buddhist culture

Beomeosa Seongbo Museum**Museum of Buddhist Cultural Heritage**

Opened in 2003, the Museum of Buddhist Cultural Heritage keeps, studies, and exhibits the Buddhist cultural heritage of Beomeosa Temple and its branch temple. It keeps the most records among Buddhist museums in Korea.

**Tourist Information**

• **Opening Hours** 09:00–17:00 • **Prices** Free • **Closing Days** Every Monday, Seollal/Chuseok Holiday

Location (Cheongnyong-dong) 250, Beomeosa-ro

Inquiries 051-508-6139

Home Page www.beomeomuseum.org

Deep stories about historic relics

Pusan National University Museum**University museum with local history**

This is the PNU Museum opened in 1964 that exhibits a wide range of relics from the Old Stone Age to Joseon Dynasty Period. It also hosts guest lectures and does other activities.

**Tourist Information**

• **Opening Hours** 09:00~17:00 • **Prices** Free
• **Closing Days** Every Sunday, Holiday and Other closing days

Location (Jangjeon-dong) 2, Busandaehak-ro 63beon-gil

Inquiries 051-510-1838

Home Page www.pnu-museum.org

Reflect on the patriotic spirit

Gukcheongsa Temple**The Buddhist temple that used to protect Geumjeongsanseong Fortress**

This is the old Buddhist temple established by Scholar-Monk Uisang in Silla, which was remodeled in the 29th year of Sukjong of Joseon. Its name means that it protects the country, Gukcheongsa Temple.

Location (Geumseong-dong) 42, Bungmun-ro



Traces of Scholar-Monk Wonhyo

Mireuksa Temple**The temple on top of Geumjeongsan Mountain**

As a branch temple of Beomeosa Temple, it was established by Scholar-Monk Wonhyo. Behind the Yeomhwajeon Main Hall lies a huge rock that looks like a monk sitting in Zen meditation, the Zen Meditation Rock.

Location (Geumseong-dong) 126, Bungmun-ro

Feel the good vibe

Jeongsuam Hermitage**The temple where clear water wells up**

This is the branch temple of Beomeosa Temple established by Monk Jinmuk in the late Joseon dynasty. The well in front of Samseonggak was called Jeongsuam (clear water hermitage).

Location (Geumseong-dong) 160, Bungmun-ro



Meet Buddhism in everyday life

Hongbeopsa Temple

See the 21 m long Amita Buddha (Amita Daebul)

Hongbeopsa Temple of Jogye Order of Korean Buddhism is an Everyday Life Buddhist Center, striving for publicizing and modernizing Buddhism. The 21 m long Buddha welcomes you with a generous smile.



Location (Dugu-dong) 202, Dugu-ro 33beon-gil

Inquiries 051-508-0345

Home Page www.busanbuddhism.net

Directions Bus 50, 58 ➔ Get off at Dongmyeon Post Office

Shuttle Bus Walk 200 m toward the terminal from Nopo Station Exit 3

Ordinary Day: 08:30–18:00 • Hongbeopsa Temple ➔ Nopo Station: Every hour on the hour, Every hour at 30 min
• Nopo Station ➔ Hongbeopsa Temple: Every hour at 15 min, 45 min

For Buddhist ceremony: 08:00–18:00 (Run on demand for a group of five)

Control your mind

Anguk Zen Center



The cradle of Korean Zen

This place was established in March 2005 in Namsan-dong, Geumjeong-gu. It serves as the cradle of Korean Zen with about 3,000 believers in Seoul and Busan.

Location (Namsan-dong) 124, Geumdan-ro

Inquiries 051-583-0993

Home Page angukzen.org

Directions Dusi Station, Metro Line 1



Memories of Japanese invasions of Korea

Hwangsando-gil and Sosan Station

Mountain Pass with old stories

Hwangsando-gil begins from Hyusan Station, Dongnae, and passes by Sosan Station to connect southern Yangsan in Nakdong River Basin and Miryang. On the hill of Dangsangil Road on the south of the village stand two stone monuments.

Nopo Station
Busan Central Bus Terminal

Hwangsando-gil

Sosan Station



Stone Monument for honoring the Virtue of Yi Manjik

The stone monument erected in Sosan Station to praise the grace of Royal Secret Investigator Yi Manjik in the 15th year of Gojong of Korea for his effort to reform welfare for officers such as waving taxes.

Location 900-3, Seon-dong



Stone Monument for honoring the Charity of Choi Yeonsu

The eulogy stone monument erected in 1697 to praise the personality and moral influence of low-class government officials in Sukjong of Joseon.

Location 900-3, Seon-dong





Escape from your routine and enjoy your rest to the fullest **Culture and Art Space**

* Culture and art space

If you need healing from the boring routine, visit performance halls and art museums in Geumjeong-gu. It will calm your overactive mind.



Geumjeong Cultural Center

This is the most famous cultural space in Geumjeong-gu that opened in 2000. Various performances, exhibitions, and lectures are provided, allowing you to enjoy the local culture.

(Guseo-dong) 7, Cheyukgongwon-ro ☎ 051-519-5651



Arko Performing Arts Center@Geumjeong

The Living Culture Hall on the first floor in Geumjeong Cultural Center transforms into a performance and art practice room. It is a great practice place for performing groups and a living culture space for residents.

(Guseo-dong) 1st floor, 7, Cheyukgongwon-ro ☎ 051-512-3455



Music Lab Busan

It is equipped with top-class music studio facilities in Korea and offers support programs to musicians in Busan.

(Jangjeon-dong) 1st basement level, Geunyoung Building, 252-1, Geumgang-ro ☎ 051-714-0530



Art District P

It is a cultural complex transformed from the land inside the company supported by Ukseung Chemical Co., Ltd. The facilities include "Geumsarak", the art theater and "Creation Space P"

(Hoedong-dong) Wook Sung Chemical Co. Ltd, 162, Gaejwa-ro ☎ 070-4322-3113



Campus D

As a social contributing platform by DRB Dongil, it is an education and culture space that supports teenagers and youth.

(Geumsa-dong) 130, Geumsa-ro ☎ 051-520-9019

Kim's Art Field Museum (Geumseong-dong) 29, Jukjeon 1-gil ☎ 051-517-6800

Namsan Hwarang(Gallery) (Namsan-dong) 426, Beomeosa-ro ☎ 051-514-4658

Moomonk (Jangjeon-dong) 90-1, Geumjeong-ro ☎ 051-517-5298

🔍 Curious about local culture, art and performances?

Search for "Geumjeong Foundation for Arts and Culture." gjfac.org



Must-visit places! **Everyday Culture Space**

* Attractive cultural spaces

There are many cultural spaces in Geumjeong. Explore galleries and workshops where you can admire the unique works of various artists.



MERGE?

Instagram @cafe_merge

It is a space with the smell of freshly brewed coffee and quiet music. Here, you can see different charms made by art and music.

(Jangjeon-dong) 49, Busandaehak-ro 50beon-gil ☎ 11:00-23:00 (Closed on Mondays)



Certain Travel

Instagram @travely__

There are many things to enjoy, as the name shows, such as travel photo exhibition and travel-related events.

(Jangjeon-dong) 2nd floor, 5, Busandaehak-ro 38beon-gil ☎ Everyday 12:00-22:00



Jewelry Gallery GONG

Instagram @gallery_gong

This is the place where works are made and exhibited, such as jewelry craft, plate, and light installation. Its modern, sensible interior will engage you to explore more.

(Seon-dong) 36-24, Sinccheon-ro ☎ 10:30-19:00 (Closed on Mondays)



Cafe Boot

Instagram @boot_cafe

It is a cultural space with drawing and coffee. You can drink a cup of coffee while drawing a picture of your own.

(Jangjeon-dong) 348, Geumgang-ro ☎ Everyday 12:00-22:00 (Closed on Wednesdays)



Pan Gallery

Instagram @frame_pan_gallery

It is a creative workplace, making something out of nothing, and exhibition space where you can admire different works. Here, you can see the process of printmaking.

(Jangjeon-dong) 2nd floor, 120, Busandaehak-ro 64beon-gil ☎ Everyday 11:00-18:00



Fake Gallery

Instagram @fake_busan

You can feel the art spirit of the artist Park Gabeom as well as admire the exhibitions at the gallery and vintage clothing at the vintage clothing shop in the first basement.

(Jangjeon-dong) 38, Jangjeon-ro ☎ Exhibition: Monday-Friday, 10:00-18:00 ☎ Vintage Shop: Monday-Saturday, 13:00-20:00



Emotional Local Bookstore

* Unique local book store

You can check out local libraries in Geumjeong if you want a special travel.
Book cafes offer entertainment with different charms.

Indie Move

You can enjoy independent publications with a cup of coffee. There is a reading club and an author's lecture at 4:00 p.m. every Saturday.

(Jangjeon-dong) 2nd Floor, 65, Surim-ro
Instagram @indiemove1303



Shop Makers

You can explore books on design, design materials, and independent publications while enjoying a sip of coffee on the other side.

(Jangjeon-dong) 120, Busandaehak-ro 64beon-gil
Instagram @shop_makers



Pretty Bookstore Hazel

It is an art bookstore where you can find rare books that can't be found in any other bookstores.

(Jangjeon-dong) 50, Busandaehak-ro 49beon-gil
Instagram @book_hazel



Astro Books

It is an independent bookstore covered by a whole glass. Here, you can get books that are not available online and join a reading club as well.

(Jangjeon-dong) 7, Geumgang-ro 321beon-gil
Instagram @astrobooks.bs



Trip with a Book Small Library

* 30 small libraries for everyone

Libraries are not just for reading books.
There are entertaining libraries in Geumjeong-gu.

Urban indoor park Geumjeong Book Park

This is a book-themed small library that looks like an urban indoor park. It has facilities like kids' craft zone and community rooms.

(Bugok-dong) 2nd Floor, 1621, Jungang-daero
Tuesday–Friday 10:00–21:00, Saturday 10:00–19:00



If you want to read comic books, this is the place! Bugok 1-dong Comic Book Small Library

There is a comic book library. It's a comic book-themed small library, the seventh public library in Geumjeong-gu, located on the fourth floor of Bugok 1-dong Community Service Center.

(Bugok-dong) 4th floor, 29, Dongbugok-ro 6beon-gil
Monday–Friday 09:00–18:00



Book tours with parents Eunbitsarangchae Small Library

It is a small library specially designed for senior citizens where you can find large print books and blood pressure-measuring devices for the home.

(Bugok-dong) 13-22, Seodong-ro 60beon-gil
Tuesday–Saturday 10:00–19:00





Cultural Asset

There are old stories hidden everywhere in Geumjeong. We have picked the famous one with the history and culture of Geumjeong.



Daeungjeon Hall of Beomeosa Temple Korea's Treasure No. 434

The current building was constructed in 1614 (the sixth year Gwanghaegun of Joseon) by the priest Myojeon and was reconstructed in 1713 (the 39th year of Sukjong of Joseon) by the priest Heungbo. It is a highly acclaimed wooden building in Busan for its beautiful structure.

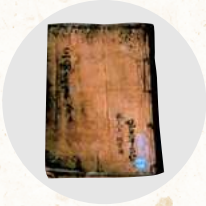
(Cheongnyong-dong) 250, Beomeosa-ro



Three-Story Stone Pagoda of Beomeosa Temple Korea's Treasure No. 250

They say that this have been erected by Heungdeok of Silla in late Silla (about the ninth century) and is made of granite with a height of 4 m and three-story pagodas on top of the two-layered stylobate.

(Cheongnyong-dong) 250, Beomeosa-ro



Samgukyusa Korea's Treasure No. 419-3

Samgukyusa is a collection of historical accounts relating to the Three Kingdoms of Korea and to other periods during and after the Three Kingdoms period, from Dangun Joseon to Gaya confederacy. Biomes Temple owns the volumes 4 and 5 of the collection.

(Cheongnyong-dong) 250, Beomeosa-ro



Jogyemun Gate of Beomeosa Temple Korea's Treasure No. 1461

This is the Iljumun gate of Biomes Temple. It is called "Samhaetalmun" as it contains doctrines that all laws and truth are met to achieve oneness.

(Cheongnyong-dong) 250, Beomeosa-ro



Wisteria Habitat at Beomeosa Temple Korean National Monument No. 176

It is a wisteria habitat in Cheongryong-dong, Geumjeong-gu, Busan. Approximately 500 trees live in the 60,000m² habitats. It is also called "Deungungok."

San 2-1, Cheongnyong-dong



Geumjeongsanseong Fortress East Gate Historic Site No. 215

It is located on the pass 415 m above the sea level in the branch ridge of Geumjeongsan Mountain and is also called "Hongyesikmun." You will marvel at breathtaking views from Geumjeongsan Mountain.

San 41-2, Geumseong-dong



Geumjeongsanseong Fortress West Gate Historic Site No. 215

It is the only great gate located in the valley among the four great gates in Busan that connected Nakdonggang river, Gupo, and Gimhae. The castle still remains robust and looks gorgeous.

133, Geumseong-dong



Geumjeongsanseong Fortress South Gate Historic Site No. 215

You can look up the front of Godangbong Peak to the north and Baegyangsan Mountain to the south. The surrounding of the upper side of the south gate is a recovered collection of all the sacred writings of Buddhism since 2009, which shows off its magnificence.

San 69, Geumseong-dong



Geumjeongsanseong Fortress North Gate Historic Site No. 215

The north gate has a deep historical meaning. They say that it was the path where the independence activities during the Japanese colonial rule passed the Godangbong Peak, Geumjeongsan Mountain, to Cheongnyeonam Hermitage for the March 1 Movement.

San 1-1, Geumseong-dong



Geumjeongsanseong Fortress Command Post Historic Site No. 215

The Command Post of Geumjeongsanseong Fortress is located on top of the hill. It was constructed in 1703 and recovered in 2009, the Geumjeong-gu Residents' Day.

San 5-5, Geumseong-dong



Travel Is Always a Good Idea

Geumjeong-gu Festival/Experience

- 62 The First Full Moon of The Year Festival,
Geumjeong Representative Festival
- 63 Festivals for Children,
Summer Water Festival
- 64 Busan Geumjeong International
Street Art Festival,
La La La Geumjeong
- 65 Accommodations, Sports
- 66 Famous Restaurant
of Geumjeong



Make a wish on a full moon night The First Full Moon of The Year Festival



It is held at Geumjeong-gu Community Sports Field by Kumjung Culture on every 15th day of the first month of the lunar calendar. You can enjoy traditional events like sheaf burning and jisinbapgi.

Meet the local history and culture Geumjeong Representative Festival



This is the famous local festival that began in 1996 and is held every May to look back on the culture and history of Geumjeong. The festival has established itself as the local cultural content with local foods.

The world for children is open Festivals for Children



Geumjeong Cultural Center hosts this event on every Children Day on May 5. It exhibits performances for children and offers experience booths and playgrounds.

Culture, art and fun Summer Water Festival



It is a summer festival where you can play in the water in summer. There is a huge outdoor pool with air slides and a children's pool where you can make unforgettable memories with your family or loved ones.

Youth and street create arts

Busan Geumjeong International Street Art Festival



This is a youth culture festival held every October near the PNU youth street. You can enjoy street arts, artworks of young artists, and flea markets.

Delicious culture festival

La La La Geumjeong



This is a festival held every October near Pusan National University Station. Here, you can taste a wide range of desserts and Lalala Sports Gathering.



Accommodations

Tourist Hotel

Name	Location	Inquiries
Hotel G&G	(Guseo-dong) 242, Geumjeong-ro	051-513-9123

Lodging business for international tourists

Name	Location	Inquiries
Geumsaem	(Jangjeon-dong) 702-ho, 106-dong, 50, Geumgang-ro 379beon-gil	051-516-9303
Dandi House	(Jangjeon-dong) 2nd floor, 116, Geumjeong-ro	010-2818-0842
Airbnb Nihao Busan	(Jangjeon-dong) 10-2, Jangjeononcheoncheon-ro 101beon-gil	010-2127-9273
Judy	(Jangjeon-dong) 1701-ho, 101-dong, 50, Geumgang-ro 379beon-gil	010-8509-1836
Busan Spa Guest House	(Jangjeon-dong) 1408-ho, 61, Geumgang-ro 279beon-gil	010-5579-0834
LIA HOUSE	(Namsan-dong) 4, Namsan-ro 51beon-gil	010-8676-8929

General Hotel

Name	Location	Inquiries
NO. 25 Hotel	(Guseo-dong) 36, Geumjeong-ro 237beon-gil	051-515-3628
Lazzi Motel	(Bugok-dong) 36-18, Jungang-daero 1763beon-gil	051-516-9584
Ma Motel	(Seo-dong) 8, Seodong-ro 194beon-gil	051-524-7878
Montblanc Motel	(Seo-dong) 3, Seodong-ro 194beon-gil	051-522-0606
Beomeojang	(Cheongnyong-dong) 5, Cheongnyongyejeon-ro	051-508-5804
Venice Motel	(Seo-dong) 18-6, Seodong-ro 186beon-gil	051-521-3535
VOV Hotel	(Guseo-dong) 30, Geumjeong-ro 237beon-gil	051-515-6433
Brown Dot Hotel	(Guseo-dong) 1833, Jungang-daero	051-516-3338
V1 Motel	(Geumsa-dong) 15, Gongdan-ro	051-526-2671
Bom Hotel	(Guseo-dong) 8, Geumjeong-ro 231beon-gil	051-513-9100
Show Motel	(Guseo-dong) 14, Geumjeong-ro 237beon-gil	051-515-3026
We Motel	(Guseo-dong) 16, Jungang-daero 1805beon-gil	051-512-1608
Le IDEA Hotel	(Bugok-dong) 21, Gamasil-ro	051-513-0071
Zenith Hotel	(Guseo-dong) 9, Geumjeong-ro 233beon-gil	051-512-2861
Jinyoungjang	(Seo-dong) 12, Seodong-ro 186beon-gil	051-524-2220
Hotel YAJA Guseo Station	(Guseo-dong) 28, Geumjeong-ro 237beon-gil	051-517-1047
HOTEL YOUAIN	(Jangjeon-dong) 28-12, Oncheonjang-ro 125beon-gil	051-581-0776
NO. 25 Hotel	(Seo-dong) 193-11, Seodong-ro	051-526-9096



Sports

Name	Location	Inquiries
Dongnae Benest Golf Club	(Seon-dong) 66, Hajeong-ro	051-580-0300
Busan Country Club	(Nopo-dong) 112, Jungang-daero 2327beon-gil	051-509-0707
Busan Paragliding School	(Guseo-dong) 224, Geumjeong-ro	051-515-6870
MRMTB	(Bugok-dong) 80-1, Osige-ro	051-581-6220